



2025 Class Ventures

# 2025 Class Ventures

As part of the Liberty Fellowship experience, leaders take action on some of the state's most pressing challenges through a venture. Ventures are opportunities for Fellows to put their passions, talents, and resources to work to make an impact in the state.

From workforce development to sustainable growth to affordable housing, the 2025 Class (Counterpoint) ventures are a testament to the Fellows' commitment to use their creativity and energy to tackle the most urgent social issues in South Carolina.

**Dive in to learn more about each venture from the Class of 2025.**

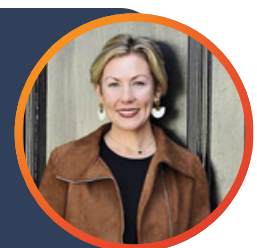
## George Campbell

Managing Partner  
*Campbell Teague*



## Ashley Cheek

Pastor  
*First Presbyterian  
Church of Hartsville*



## Project Spero

Project Spero addresses the national shortage of pilots and aircraft mechanics by strengthening South Carolina's role in aviation workforce development. With A&P salaries averaging \$70,000 and top earners exceeding six figures, the project focuses on expanding access to high-paying careers while reducing student debt. It will introduce the free AOPA curriculum in three schools to prepare students for certification exams and establish an A&P business that offers apprenticeships, with plans to evolve into a certified Part 147 training school.

## Hartsville House

The Hartsville House, an extension of the House of Hope in Florence, serves as a vital support center for individuals and families in Hartsville and Darlington County. It provides essential resources such as utility and bill assistance, hygiene supplies, laundry facilities, and access to trained clinicians, helping those in crisis build lasting stability. With \$1.5 million left to raise, efforts are underway to secure funding and ensure the Hartsville House reaches its full potential.

## Grayson Dorr

Senior Project Manager  
**Advanced Technology International**



## Bern DuPree

Chief Executive Officer  
**Vista Capital Management Group**



## Fostering the Community

Fostering the Community bridges faith communities, foster families, and DSS staff to provide meaningful support and advocacy for those involved in the foster care system. By addressing root causes of family separation, such as housing insecurity and lack of support networks, it works to strengthen families and stabilize communities. Through awareness events, small-group discussions, and partnerships with organizations such as Fostering the Family, it is creating spaces for healing, collaboration, and systemic change. The plan is to expand training, increase community engagement, and create lasting systems of care for families at risk.

## ALICE House

ALICE House, named for Asset Limited Income Constrained Employed, seeks to provide stable housing for families at risk of homelessness, partnering with organizations like United Ministries. By working with local landlords and working to acquire its own housing, ALICE House will ensure sustainable options for families, including families with school-age children who are living in hotels/motels. Its first family successfully transitioned from homelessness to stability, supported by community partners. With branding, a website, and Instagram in place, ALICE House plans to launch fundraising efforts in October 2025 to secure its first home and plan for long-term growth.

## Liz Fly, Ph.D.

Director of Resilience & Ocean Conservation  
**The Nature Conservancy**



## Jonathan Grzyb

Chief Executive Officer  
**Pathway Homes**



## Palmetto Resilient Youth Mentorship

The Palmetto Resilient Youth Mentorship (PRYM) is a 14-week afterschool program for 8th graders in South Carolina, focusing on conservation, natural resources, and Earth sciences. Students engage in weekly virtual sessions, connect with local experts and mentors from organizations like The Nature Conservancy and SC Department of Natural Resources, and develop a project to present to their class. Each participant receives mentorship, a Certificate of Completion, and valuable career connections. Launching in fall 2025 at Laing Middle School in Mt. Pleasant, SC, PRYM plans to eventually expand statewide and engage more students.

## Mission Driven Equity

Mission Driven Equity empowers military veterans to become business owners through a 12-month structured training program focused on sourcing, financing, and operating small to mid-sized companies. Backed by an initial \$3 million fund, the program will make equity investments and support veterans in acquiring 10 historically profitable businesses. By combining hands-on training with real capital opportunities, Mission Driven Equity aims to help veterans build generational wealth, strengthen local economies, and drive sustainable growth in the small business sector.

## Mena Mark Hanna

General Director and  
CEO  
*Spoletto Festival USA*



## Jamilla Harper

Chief Operating Officer  
*Metanoia Community  
Development Corp.*



## Early Learning through the Arts

Spoletto, a nearly 50-year-old institution, is the newest affiliate in helping bring the Wolf Trap Institute for Early Learning through the Arts to the Lowcountry. The program provides customized classroom residencies with professionally trained Teaching Artists, giving preschool and early elementary students hands-on enrichment that enhances cognitive, academic, and social development. Teachers also benefit from unique professional development opportunities. With seed funding from the South Carolina Arts Commission, Spoletto and the Wolf Trap Institute for Early Learning through the Arts aims to expand the program across nine Lowcountry counties, offering free access to Title I schools.

## Museums of US

The Museum of US has been embedded in the southern half of North Charleston to document the stories, rituals, and spaces that define their community. These narratives - churches as meeting halls, porches as forums, community centers out of homes, reveal a blueprint of belonging. Now, they are being transformed into an interactive, AI-powered platform that shapes the future of housing, public spaces, and infrastructure. By the end of 2025, the project will host storytelling activations, engage at least 500 residents in shaping AI-generated visions, and deliver these insights to decision-makers to ensure that development reflects the community's values, preserving its history while co-creating a future.

## Lana Kleiman

Executive Director  
*Charleston Legal Access*



## Maurie Lawrence

Sustainability VP and  
Associate General Counsel  
*Milliken & Company*



## Immigration Law Project

The Immigration Law Project provides affordable, high-quality immigration services for those who don't qualify for free aid but cannot afford private attorneys. By hiring a bilingual attorney and expanding outreach, the program is set to help families secure work authorization and lawful status, improving financial stability and access to justice. The project offers "Know Your Rights" clinics, culturally relevant resources, and ongoing support to strengthen South Carolina's growing Hispanic and Latinx communities.

## Advancing Sustainable Growth in South Carolina

The Center for Sustainable Growth at the University of South Carolina's Darla Moore School of Business connects business and academia to drive research, education, and engagement that advance long-term sustainable growth in South Carolina. The Center focuses on real-world solutions, from reliable and accessible clean energy to developing a talent pipeline that meets evolving business leadership needs. Engagement areas include roundtables, networking, facilitated workshops, and accelerated processes for businesses and academia to collaborate on innovative solutions.

## Neetu Patel

VP of Operations  
*Sycamore Investments Group*



### Identifying Dyslexia

This venture focuses on identifying dyslexia in K-2 students, particularly in schools where parents may lack the resources or knowledge to advocate for their children. Partnering with AMIRA Learning, which uses AI to assess reading strengths and challenges, the project helps children understand that their brains learn differently. By collaborating with educators and analyzing early data from Greenville County Schools, the initiative refines its approach to expand AI-driven early identification and support for dyslexic students, ensuring they receive effective, personalized learning strategies.

## Estee Perlmutter

Advanced Practice Nurse  
*Liberty Doctors*



### A Black-Jewish Purposeful Collaboration to Improve Justice

This venture focuses on strengthening relationships between Charleston's African American and Jewish communities by revisiting their historic alliance during the Civil Rights Movement and fostering dialogue and understanding. Drawing on her work with Operation Understanding and Jewish Studies Inc., Estee has partnered with local organizations committed to justice. Avi Dresner will visit Charleston to share the story of the Black-Jewish Alliance through his father's relationship with Dr. Martin Luther King Jr., followed by conversations with community leaders, activists, and attendees on the alliance's relevance today. This event aims to inspire continued dialogue, connection, and collective advocacy for human rights and equity.

## Alyssa Richardson

Founder and CEO  
*Develop South Carolina*



### Palmetto Housing Fund

Palmetto Housing Fund is a statewide, private placement fund to support the creation of new housing and the preservation of existing affordable housing. Through key partnerships with banks, employers, and local municipalities, the fund is primed to make strategic investments across South Carolina. Liberty Fellowship has allowed Alyssa to engage with stakeholders, including market-rate developers, to conduct market research and explore this thesis: Can the aggregation of low-cost capital and public investments incentivize developers to designate a specific number of housing units for income-restricted households? Currently, the fund has secured two anchor investors and continues its fundraising efforts for a first close in 2026.

## Margaret Seeley

Founder  
*LOULOU*



### THE EXHALE-Voice AI Breathwork for Hospitality Teams

The Exhale is a voice-activated phone line that delivers guided breathwork sessions through AI, designed specifically to support the mental health and emotional well-being of hospitality professionals. Designed for high-pressure work environments, it provides an anonymous, always-accessible space for workers to reset, recharge, and regulate their nervous systems. Built with input from certified breathwork practitioners, The Exhale guides users through personalized exercises right from their phones.

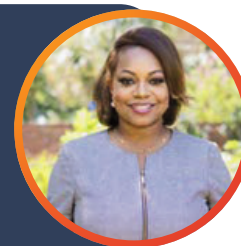
## Allen Smith

President & CEO  
*OneSpartanburg, Inc.*



## Kimberly Smith

Founder and CEO  
*Health Evolve*



### Project 1000

Project 1000 addresses South Carolina's workforce challenges by tackling one of the state's biggest barriers to labor force participation: access to high-quality childcare. Through a \$200,000 pilot fund, OneSpartanburg, Inc., First Steps, Quality Counts, and the Mary Black Foundation provided small childcare centers with the capital needed to modify facilities and add 1,000 new high-quality seats in just four months. By leveraging expert feedback, proven strategies from other states, and legislative engagement, the initiative seeks to expand affordable, high-quality childcare, strengthen local businesses, and boost workforce participation across South Carolina.

### The Lauren Kelly Foundation, Inc.

The Lauren Kelly Foundation, Inc. (LKF) exists to improve the health and economic well-being of families and communities facing challenges. LKF aims to provide direct financial support to families in need of health-promoting resources as well as offer investment in community coalitions to add/expand community-based businesses. Founded in honor of Lauren Kelly Smith, whose life was tragically lost due to Kim Smith having a sudden hypertensive disorder of pregnancy, the Foundation channels personal loss into meaningful action, working hand in hand with communities to foster equity, hope, and lasting impact.

## Ashely Teasel

Deputy Secretary  
**South Carolina**  
**Department of Commerce**



## Jarrold Tippins

Owner & Pharmacist  
*The Pharmacy*



### Seeds of Leadership: Sowing Today for Tomorrow's Harvest

Seeds of Leadership: Sowing Today for Tomorrow's Harvest was founded on the belief that leadership is not about titles but about growth, influence, and service. South Carolina's success depends on leaders who are self-aware, adaptable, and purposeful. Created to meet the need for trusted spaces of encouragement and practical guidance, Seeds of Leadership provides mentorship, thought partnership, and speaking engagements that inspire authentic and effective leadership. The growing platform also includes the Seeds of Leadership Micro-Podcast, a series of five-minute leadership lessons, tips, and stories.

### Create a Specialized School within the USC College of Pharmacy

Jarrold's vision is to create a specialized program within the USC College of Pharmacy for students from economically disadvantaged backgrounds who aspire to own and operate independent pharmacies. Many of these students lack familial or industry experience, and this program provides the guidance and resources to bridge that gap. By empowering a new generation of independent pharmacists, this program supports the survival and growth of local pharmacies, strengthens access to healthcare in underserved communities, and reinforces the role of pharmacists as trusted, community-centered caregivers.

## Chris Turner

Lieutenant Colonel  
**United States Army**  
**Central Command**



## Guang Ming Whitley

Business Development  
Manager  
**O'Melveny & Myers LLP**



## HOL Solutions

HOL (Holistic Organizational Leadership) Solutions adapts the U.S. Army's former Master Resiliency and Suicide Awareness/Prevention programs for civilian and veteran organizations. By leveraging experienced subject matter experts, HOL Solutions provides training, climate assessments, and resources on mental health, family support, and overall welfare to veteran programs, first responders, law enforcement, fire departments, and EMS units. Training materials are in development, with planned integration into events hosted by organizations like the Patriot Frontline Foundation.

## Lattice Climbers Ambassador Program

Lattice Climbers is a nonprofit preparing high school students for real-world success through short, engaging microlessons in professionalism, financial literacy, and essential life skills. The LC Resource Library, a free YouTube channel with 77 videos and supporting worksheets, gives students accessible tools to climb the "lattice" of opportunity, not just the traditional career ladder.

## Gillian Zettler

Founder  
**G. Zettler Collective**



## Mental Health in Motion

Launching in fall 2025, this large-scale, single-day event will bring together over 1,000 attendees to build community, spark dialogue, and raise awareness about the mental health crisis and epidemic of loneliness. Using music and movement, the event will position South Carolina as a leader in redefining the conversation around mental health, demonstrating that transformative, cutting-edge experiences don't have to be limited to major metropolitan areas.

